



VALSTAR VALVE



The triple offset - metal
Seated high-performance
butterfly valve

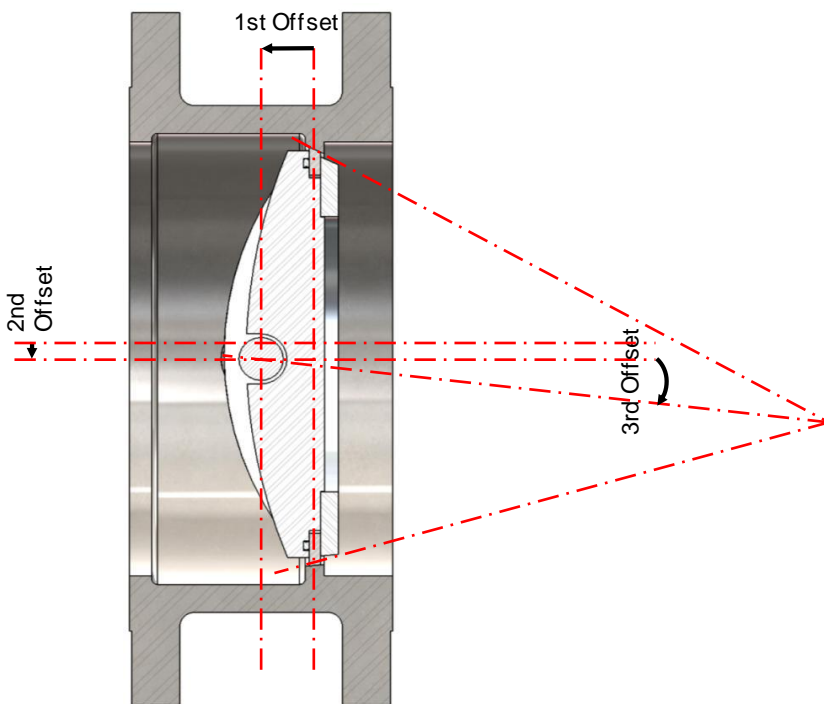
The DAHER logo consists of three small red squares arranged in a 2x2 grid (with the bottom-right square missing) to the left of the word "DAHER" in a bold, white, sans-serif font.

DAHER

VALSTAR VALVE

KEY INFORMATION

- High performance levels in Control or On/Off service
 - Specific shape of disc
 - Low differential pressure construction
- Triple Offset design
 - No friction during opening and closing
- Metal / metal sealing
 - Improved service life
 - Good resistance to erosion
- Bi-directional design
- Available with any kind or brand of actuator
- Compatible with most fluids due to optimal selection of construction materials
- Anti blow-out construction
 - One-piece shaft assembled by pins
- Compliant with Fire Safe and/or NACE requirements



THE TRIPLE OFFSET DESIGN

VERDELET was one of the first butterfly valve manufacturers to propose the triple offset design in its butterfly valves.

1st Offset:

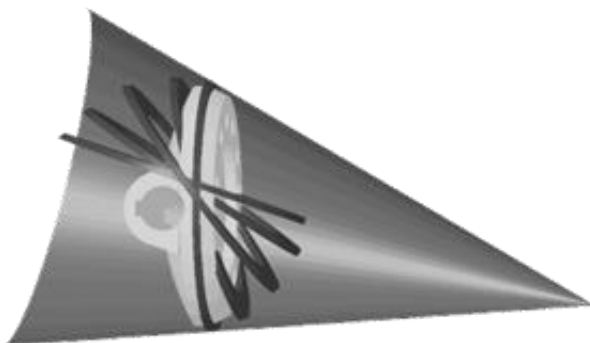
The shaft of the valve is behind the disc, which provides a continuous sealing area all around the disc.

2nd Offset:

The shaft of the valve is located under the nominal centreline of the pipe. This offset allows the valve gasket to use in-plane rotation and be moved away from the valve seat. By avoiding friction between the gasket and the seat, it also allows the necessary opening and closing torques to be reduced.

3rd Offset:

The axis of the conical sealing area is inclined in relation to the nominal centreline of the pipe, which has the effect of preventing any more friction between the valve gasket and its seat throughout the travel of the disc.



The combination of the 3 offsets gives the valve very high performance levels in terms of tightness, very low operating torques and very smooth running on the 90° travel of the disc.

VALSTAR VALVE

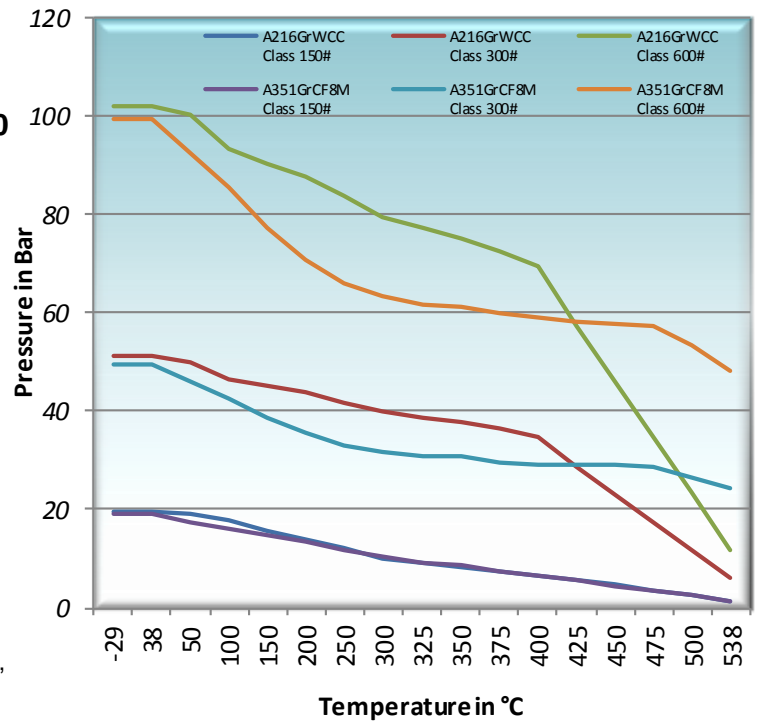
PRODUCT INFORMATION

- From **DN3" (150mm) to DN80" (2000mm)** and more
- From **150# to 2500#** as per ASME B16.34 - From **PN10 to PN420** as per EN12516
- Working temperature from **-196°C to +650°C**
- Available in all body constructions (Wafer, Lug, Double Flanged, Butt Weld & **Steam Jacket**)
- Face finish Type A-B, RF, FF, RTJ, Form C, R13...
- Standard constructions in carbon steel (A216GrWCC) and stainless steel (A351 GrCF8M) or equivalent materials as per PED requirements

Other grades and other materials available on request (Alloy steel, Aluminium-Bronze, Duplex, Super Duplex, Inconel®, Monel®, Uranus, Titanium...)

Chemical or Electrolytic treatments also available

Pressure / Temperature ratio (As per ASME B16.34)*



* Other materials and temperatures on request
Also available for PED-compliant materials



CODES & STANDARDS

| | |
|-------------------------|---|
| Quality Assurance | ISO 9001 - 2008 |
| Design and Construction | PED 97/23/EC module H, ASME/ANSI B16.34, API609, CODAP 2005, ISO5211 |
| Connection | ASME B16.5 – ASME B16.47 series A or B ISO / NF EN 29283 – DIN, AWWA C207D – C207E |
| Face-to-Face dimensions | ISO5752, API609 |
| Testing | API598, ISO5208 / GOST FCI70.2 / ANSI B16.104 |
| Fire Safe | API6FA - API607 |
| NACE Construction | NACE MR1075 |

* Other construction codes available on request

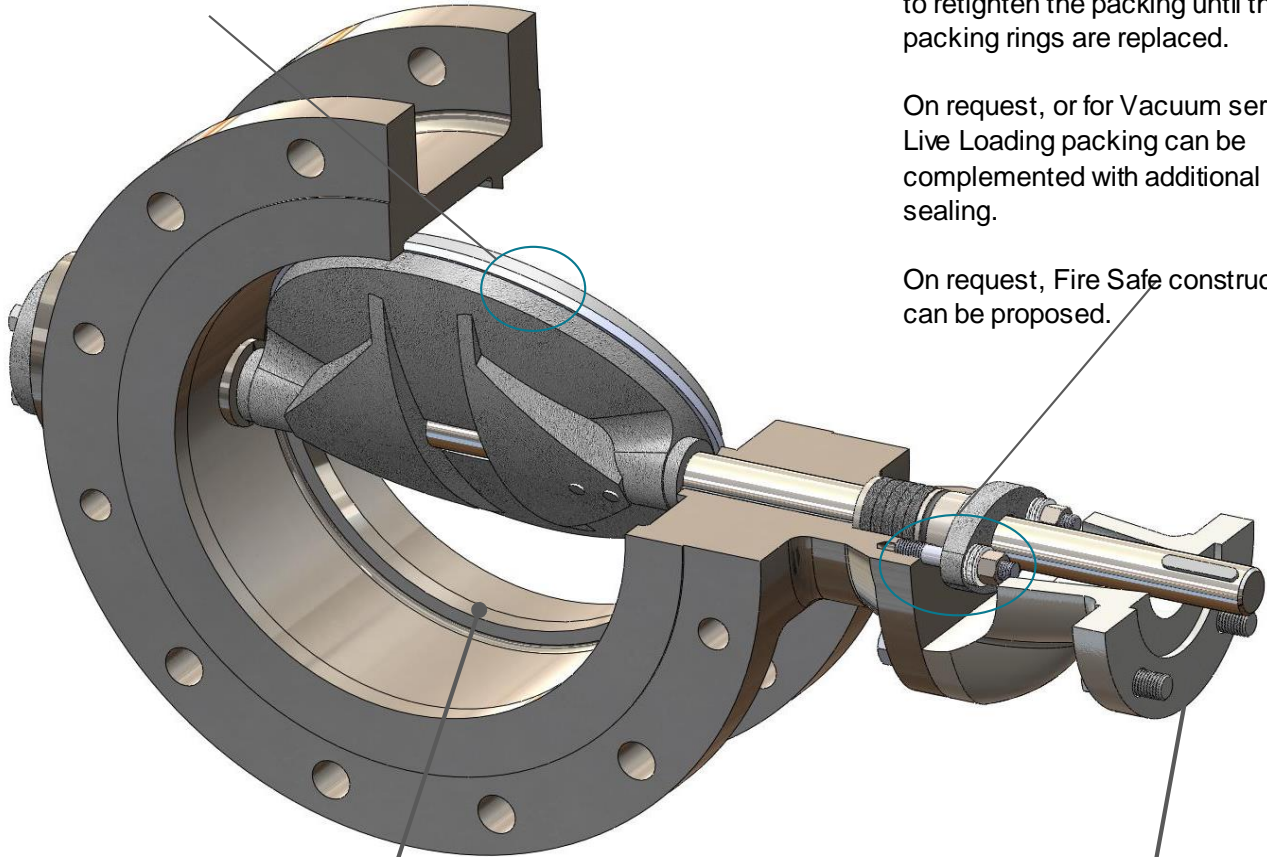
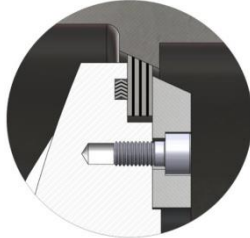


DESIGN FEATURES

ZERO LEAKAGE & BI-DIRECTIONAL DESIGN

The VALSTAR Valve offers two possibilities for the execution of the sealing gasket:

- A one-piece metal gasket for a longer service life or,
- A lamellar metal/graphite gasket reinforced with a spiral-wound gasket for "Zero" Leakage tightness performance or bi-directional service. The damping effect of the spiral-wound gasket allows the gasket to find its optimal place for a high degree of tightness and provides a constant operating pressure in both directions even under high-pressure operation.

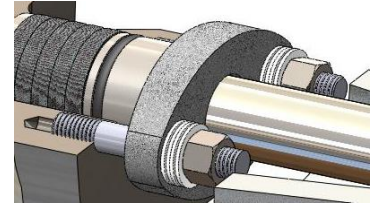


INTEGRAL SEAT MACHINED IN THE BODY

Based on process conditions, VERDELET performs an overlay on it with stainless steel for Carbon steel bodies or Stellite, Inconel@...

No maintenance required on the valve seat.

LIVE LOADING PACKING



Live Loading packing is a special type of valve packing which, thanks to the addition of Belleville washers, offers better shaft tightness for toxic or corrosive fluids. Moreover, the constant pressure provided by Belleville washers removes the need to retighten the packing until the packing rings are replaced.

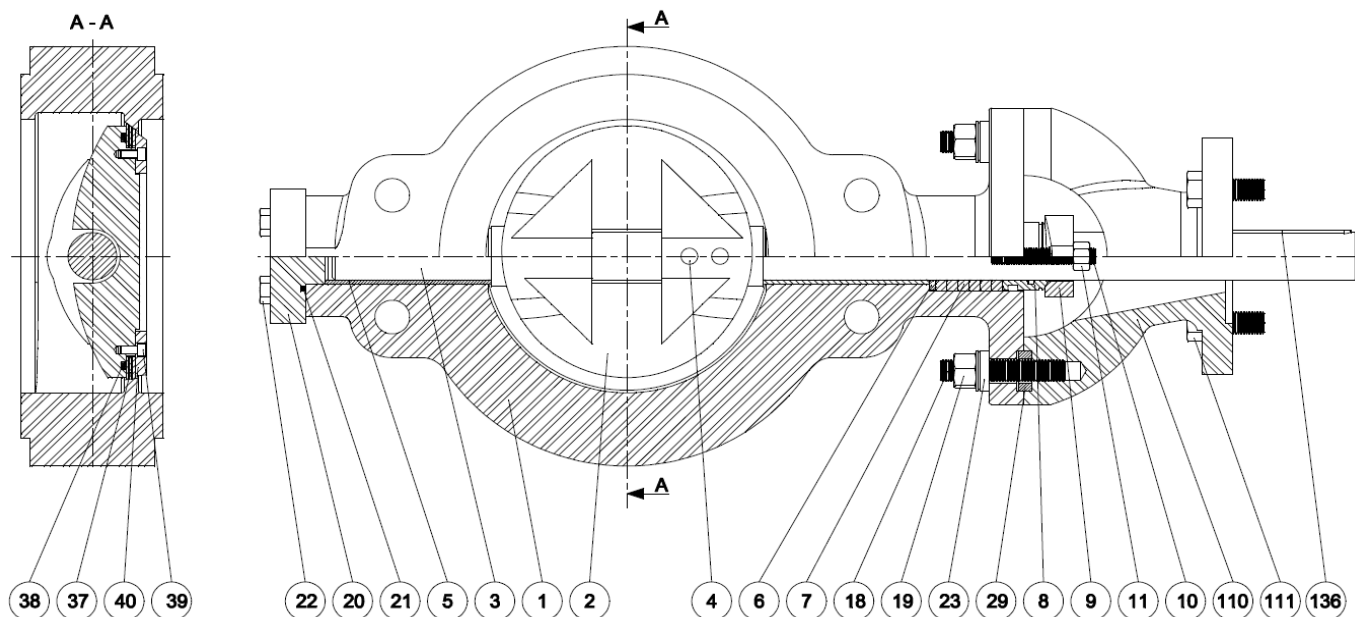
On request, or for Vacuum service, Live Loading packing can be complemented with additional rubber sealing.

On request, Fire Safe construction can be proposed.

EXTENSION

All VALSTAR valves are equipped with a standard extension offering access to the packing for retightening or replacement. This standard extension also prevents the actuator from heating in operations up to 400°C.

BASIC MATERIAL CONSTRUCTION (OTHER MATERIALS ON REQUEST)



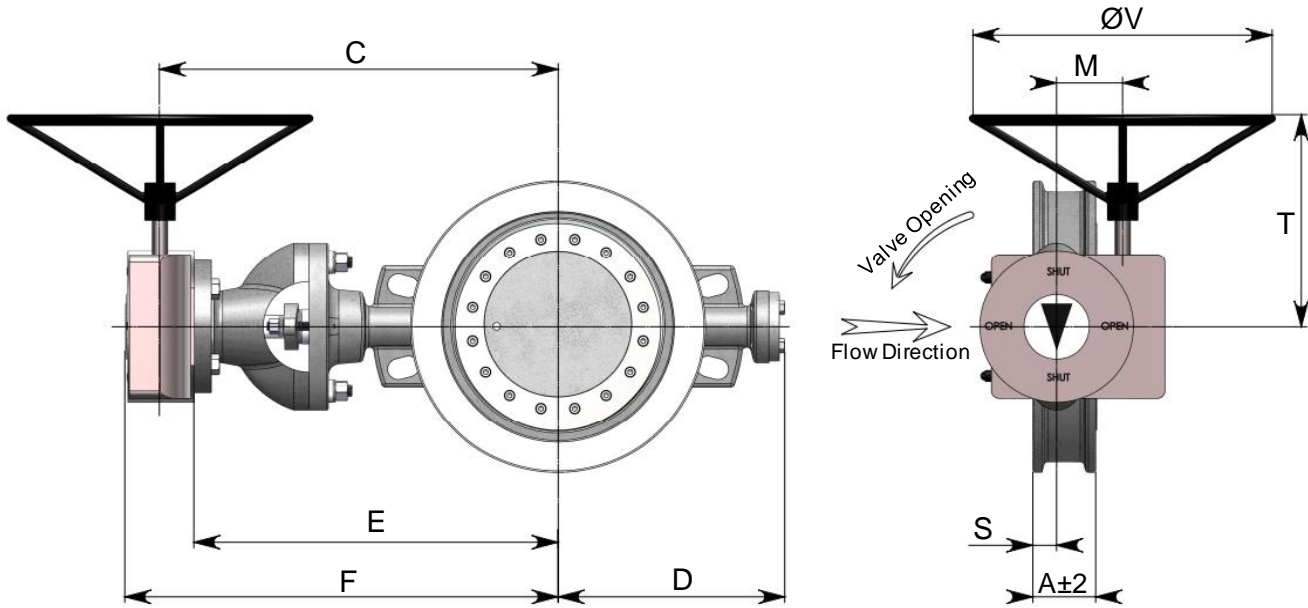
| Item | Designation | Quantity | Material for Standard construction in Carbon Steel | Material for Standard construction in Stainless Steel |
|------|-----------------------|----------|---|--|
| 1 | Body | 1 | ASTM A216 Gr. WCC or equivalent material as per PED requirements | ASTM A351 Gr. CF8M or equivalent material as per PED requirements |
| | Integral Seat | | AISI309 LSI Overlay or Solid Stellite Gr.21 Hard facing | ASTM A351 Gr. CF8M or Solid Stellite Gr.21 Hard facing |
| 2 | Disc | 1 | ASTM A216 Gr. WCC or Hardened AISI420 as an optional | ASTM A351 Gr. CF8M |
| 3 | Shaft | 1 | Hardened 17-4Ph | Hardened 17-4Ph |
| 4 | ● Pin | 2 | Hardened 17-4Ph | Hardened 17-4Ph |
| 5 | ● Bearing | 2 | PTFE Glass filled or Hardened AISI440C or Solid Stellite Gr.6 | PTFE Glass filled or Hardened AISI440C or Solid Stellite Gr.6 |
| 6 | Packing Washer | 1 | AISI 304L | AISI 304L |
| 7 | ○ ● Packing Rings | Variable | PTFE or Graphite | PTFE or Graphite |
| 8 | Packing Gland | 1 | AISI 304L | AISI 304L |
| 9 | Packing Flange | 1 | 1.4404 Stainless steel | 1.4404 Stainless steel |
| 10 | Stud | 2 | ASTM A193 Gr.B8M | ASTM A193 Gr.B8M |
| 11 | Nut | 2 | ASTM A194 Gr.8M | ASTM A194 Gr.8M |
| 18 | Stud | 2 | ASTM A193 Gr.B8M | ASTM A193 Gr.B8M |
| 19 | Nut | 2 | ASTM A194 Gr.8M | ASTM A194 Gr.8M |
| 20 | Cover | 1 | 1.4404 Stainless steel | 1.4404 Stainless steel |
| 21 | ● Gasket | 1 | Graphite | Graphite |
| 22 | Screw | 4 | ASTM A193 Gr.B8M | ASTM A193 Gr.B8M |
| 23 | Washer | 2 | AISI 304L | AISI 304L |
| 29 | Centre Ring | 2 | Carbon Steel | Carbon Steel |
| 37 | ● Seal | 1 | Duplex or Duplex / Graphite | Inconel® or Inconel® / Graphite |
| 38 | ● Spiral-wound gasket | 1 | AISI316 / Graphite | AISI316 / Graphite |
| 39 | Screw | Variable | ASTM A193 Gr.B7 | ASTM A193 Gr.B8M |
| 40 | Counter Flange | 1 | P265GH | AISI 316L |
| 110 | Extension | 1 | ASTM A216 Gr. WCC | ASTM A216 Gr. WCC |
| 111 | Screw | Variable | Class 10-9 (Carbon steel) | A4-70 (Stainless steel) |
| 136 | Key | Variable | CK45 (Carbon steel) | CK45 (Carbon steel) |

- Other materials on request.

- The materials listed are for information only and can be changed to comply with NACE MR01-75 requirements or any other process conditions.

- Recommended spare parts for commissioning
- Recommended spare parts for maintenance operations every 2 years

GENERAL OVERALL DIMENSIONS – WAFER TYPE



VALSTAR VALVE CLASS 150# - PN10-16-20

| Valve Size | | Dimensions in mm | | | | | | | | | Weight in Kg | |
|------------|------|------------------|-----|-----|-----|------|------|-----|-----|-----|--------------|---------|
| In | mm | A±2 | S | D | E | C | F | M | T | ØV | Valve | Gearbox |
| 3 | 80 | 48 | 23 | 143 | 295 | 325 | 358 | 52 | 184 | 160 | 14 | 5 |
| 4 | 100 | 54 | 24 | 168 | 320 | 350 | 383 | 52 | 184 | 160 | 16 | 5 |
| 6 | 150 | 57 | 26 | 190 | 340 | 370 | 403 | 52 | 184 | 160 | 25 | 5 |
| 8 | 200 | 64 | 29 | 213 | 365 | 406 | 453 | 71 | 297 | 400 | 34 | 11 |
| 10 | 250 | 71 | 28 | 255 | 440 | 488 | 539 | 105 | 346 | 500 | 52 | 26 |
| 12 | 300 | 81 | 31 | 296 | 475 | 523 | 574 | 105 | 346 | 500 | 75 | 26 |
| 14 | 350 | 92 | 39 | 326 | 500 | 563 | 626 | 211 | 475 | 500 | 110 | 49 |
| 16 | 400 | 102 | 41 | 364 | 560 | 623 | 686 | 211 | 475 | 500 | 164 | 49 |
| 18 | 450 | 114 | 48 | 387 | 585 | 648 | 711 | 211 | 475 | 500 | 199 | 49 |
| 20 | 500 | 127 | 55 | 427 | 670 | 750 | 829 | 357 | 586 | 500 | 277 | 104 |
| 24 | 600 | 154 | 70 | 475 | 720 | 800 | 879 | 357 | 586 | 500 | 447 | 104 |
| 28 | 700 | 165 | 72 | 525 | 775 | 855 | 934 | 357 | 586 | 500 | 573 | 104 |
| 32 | 800 | 190 | 90 | 604 | 895 | 975 | 1054 | 357 | 586 | 500 | 888 | 104 |
| 36 | 900 | 203 | 102 | 635 | 950 | 1043 | 1136 | 431 | 629 | 800 | 1073 | 232 |
| 40 | 1000 | 216 | 90 | 699 | 990 | 1083 | 1176 | 431 | 629 | 800 | 1204 | 232 |

VALSTAR VALVE CLASS 300# - PN25-40-50

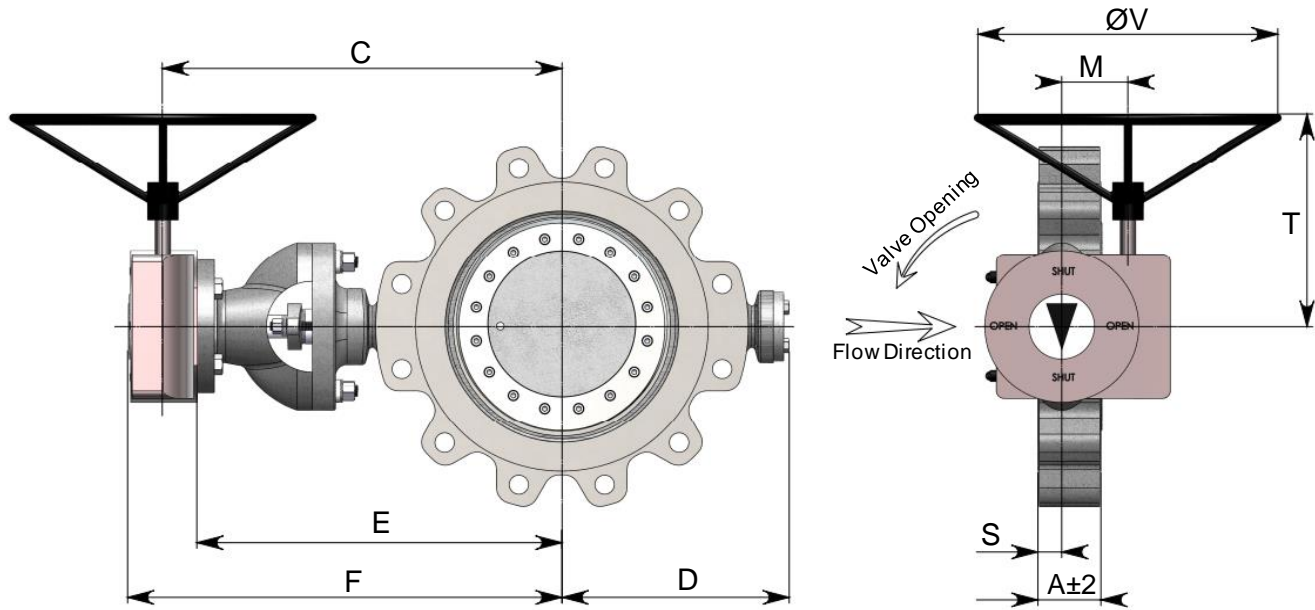
| Valve Size | | Dimensions in mm | | | | | | | | | Weight in Kg | |
|------------|-----|------------------|----|-----|-----|-----|-----|-----|-----|-----|--------------|---------|
| In | mm | A±2 | S | D | E | C | F | M | T | ØV | Valve | Gearbox |
| 3 | 80 | 48 | 23 | 143 | 295 | 325 | 358 | 52 | 184 | 160 | 14 | 5 |
| 4 | 100 | 54 | 24 | 168 | 320 | 350 | 383 | 52 | 184 | 160 | 16 | 5 |
| 6 | 150 | 59 | 26 | 203 | 355 | 396 | 443 | 71 | 297 | 400 | 27 | 11 |
| 8 | 200 | 73 | 33 | 240 | 425 | 473 | 524 | 105 | 346 | 500 | 50 | 26 |
| 10 | 250 | 83 | 37 | 277 | 457 | 520 | 583 | 211 | 475 | 500 | 97 | 49 |
| 12 | 300 | 92 | 44 | 309 | 507 | 570 | 633 | 211 | 475 | 500 | 139 | 49 |
| 14 | 350 | 117 | 59 | 330 | 585 | 665 | 744 | 357 | 586 | 500 | 214 | 104 |
| 16 | 400 | 133 | 67 | 375 | 630 | 710 | 789 | 357 | 586 | 500 | 290 | 104 |
| 18 | 450 | 149 | 75 | 410 | 660 | 740 | 819 | 357 | 586 | 500 | 335 | 104 |
| 20 | 500 | 159 | 80 | 443 | 700 | 780 | 859 | 357 | 586 | 500 | 374 | 104 |
| 24 | 600 | 181 | 85 | 496 | 750 | 843 | 936 | 431 | 629 | 800 | 561 | 232 |

VALSTAR VALVE CLASS 600# - PN64-100

| Valve Size | | Dimensions in mm | | | | | | | | | Weight in Kg | |
|------------|-----|------------------|-----|-----|-----|------|------|-----|-----|------|--------------|---------|
| In | mm | A±2 | S | D | E | C | F | M | T | ØV | Valve | Gearbox |
| 4 | 100 | 64 | 32 | 227 | 322 | 363 | 410 | 71 | 297 | 400 | 26 | 11 |
| 6 | 150 | 78 | 39 | 288 | 395 | 443 | 494 | 105 | 346 | 500 | 59 | 26 |
| 8 | 200 | 102 | 51 | 264 | 435 | 498 | 561 | 211 | 475 | 500 | 91 | 49 |
| 10 | 250 | 117 | 57 | 323 | 560 | 640 | 719 | 357 | 586 | 500 | 181 | 104 |
| 12 | 300 | 140 | 70 | 354 | 557 | 637 | 716 | 357 | 586 | 500 | 306 | 104 |
| 14 | 350 | 155 | 78 | 383 | 615 | 695 | 774 | 357 | 586 | 500 | 322 | 232 |
| 16 | 400 | 173 | 87 | 414 | 650 | 743 | 836 | 431 | 629 | 800 | 358 | 232 |
| 18 | 450 | 186 | 93 | 462 | 753 | 846 | 939 | 431 | 629 | 800 | 534 | 232 |
| 20 | 500 | 194 | 97 | 503 | 806 | 899 | 992 | 431 | 629 | 800 | 664 | 232 |
| 24 | 600 | 218 | 109 | 572 | 875 | 1045 | 1189 | 160 | 763 | 1200 | 915 | 225 |

- Larger sizes and ratings on request.

GENERAL OVERALL DIMENSIONS – LUG TYPE



VALSTAR VALVE CLASS 150# - PN10-16-20

| Valve Size | | Dimensions in mm | | | | | | | | | Weight in Kg | |
|------------|------|------------------|-----|-----|-----|------|------|-----|-----|-----|--------------|---------|
| In | mm | A±2 | S | D | E | C | F | M | T | ØV | Valve | Gearbox |
| 3 | 80 | 48 | 23 | 143 | 295 | 325 | 358 | 52 | 184 | 160 | 23 | 5 |
| 4 | 100 | 54 | 24 | 168 | 320 | 350 | 383 | 52 | 184 | 160 | 29 | 5 |
| 6 | 150 | 57 | 26 | 190 | 340 | 370 | 403 | 52 | 184 | 160 | 39 | 5 |
| 8 | 200 | 64 | 29 | 213 | 365 | 406 | 453 | 71 | 297 | 400 | 59 | 11 |
| 10 | 250 | 71 | 28 | 255 | 440 | 488 | 539 | 105 | 346 | 500 | 84 | 26 |
| 12 | 300 | 81 | 31 | 296 | 475 | 523 | 574 | 105 | 346 | 500 | 127 | 26 |
| 14 | 350 | 92 | 39 | 326 | 500 | 563 | 626 | 211 | 475 | 500 | 183 | 49 |
| 16 | 400 | 102 | 41 | 364 | 560 | 623 | 686 | 211 | 475 | 500 | 258 | 49 |
| 18 | 450 | 114 | 48 | 387 | 585 | 648 | 711 | 211 | 475 | 500 | 319 | 49 |
| 20 | 500 | 127 | 55 | 427 | 670 | 750 | 829 | 357 | 586 | 500 | 438 | 104 |
| 24 | 600 | 154 | 70 | 475 | 720 | 800 | 879 | 357 | 586 | 500 | 730 | 104 |
| 28 | 700 | 165 | 72 | 525 | 775 | 855 | 934 | 357 | 586 | 500 | 814 | 104 |
| 32 | 800 | 190 | 90 | 604 | 895 | 975 | 1054 | 357 | 586 | 500 | 1295 | 104 |
| 36 | 900 | 203 | 102 | 635 | 950 | 1043 | 1136 | 431 | 629 | 800 | 1574 | 232 |
| 40 | 1000 | 216 | 90 | 699 | 990 | 1083 | 1176 | 431 | 629 | 800 | 1687 | 232 |

VALSTAR VALVE CLASS 300# - PN25-40-50

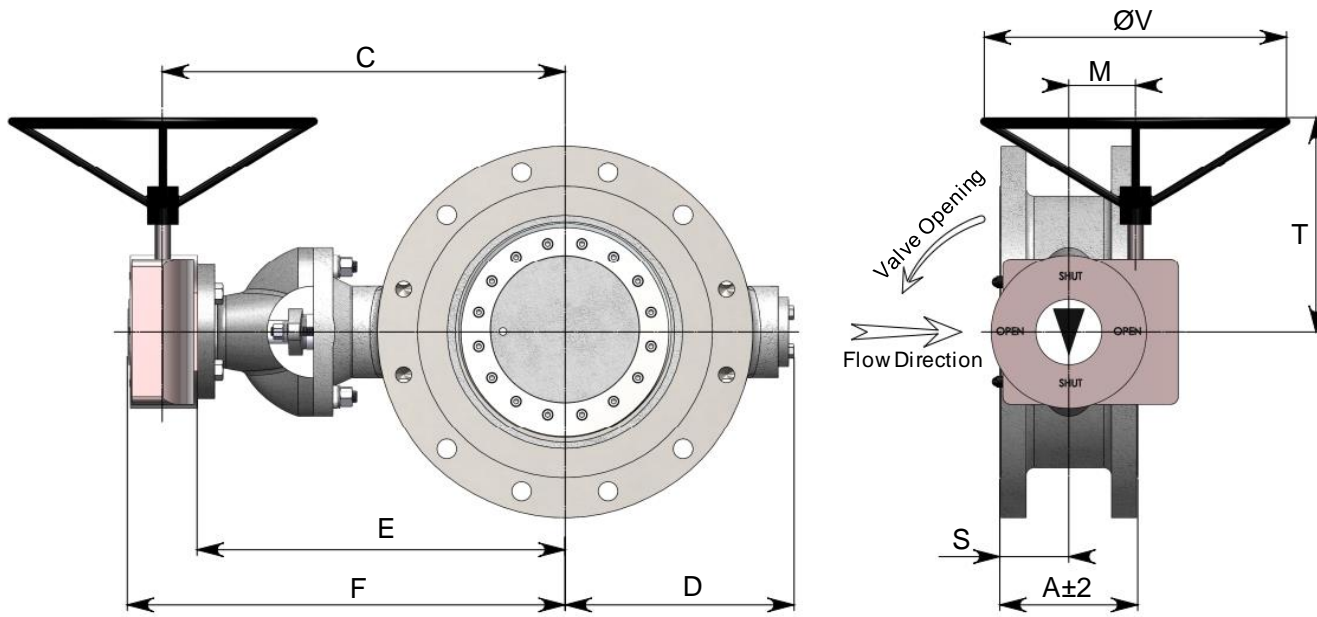
| Valve Size | | Dimensions in mm | | | | | | | | | Weight in Kg | |
|------------|-----|------------------|----|-----|-----|-----|-----|-----|-----|-----|--------------|---------|
| In | mm | A±2 | S | D | E | C | F | M | T | ØV | Valve | Gearbox |
| 3 | 80 | 48 | 23 | 143 | 295 | 325 | 358 | 52 | 184 | 160 | 23 | 5 |
| 4 | 100 | 54 | 24 | 168 | 320 | 350 | 383 | 52 | 184 | 160 | 29 | 5 |
| 6 | 150 | 59 | 26 | 203 | 355 | 396 | 443 | 71 | 297 | 400 | 48 | 11 |
| 8 | 200 | 73 | 33 | 240 | 425 | 473 | 524 | 105 | 346 | 500 | 86 | 26 |
| 10 | 250 | 83 | 37 | 277 | 457 | 520 | 583 | 211 | 475 | 500 | 127 | 49 |
| 12 | 300 | 92 | 44 | 309 | 507 | 570 | 633 | 211 | 475 | 500 | 243 | 49 |
| 14 | 350 | 117 | 59 | 330 | 585 | 665 | 744 | 357 | 586 | 500 | 301 | 104 |
| 16 | 400 | 133 | 67 | 375 | 630 | 710 | 789 | 357 | 586 | 500 | 405 | 104 |
| 18 | 450 | 149 | 75 | 410 | 660 | 740 | 819 | 357 | 586 | 500 | 562 | 104 |
| 20 | 500 | 159 | 80 | 443 | 700 | 780 | 859 | 357 | 586 | 500 | 601 | 104 |
| 24 | 600 | 181 | 85 | 496 | 750 | 843 | 936 | 431 | 629 | 800 | 912 | 232 |

VALSTAR VALVE CLASS 600# - PN64-100

| Valve Size | | Dimensions in mm | | | | | | | | | Weight in Kg | |
|------------|-----|------------------|-----|-----|-----|------|------|-----|-----|------|--------------|---------|
| In | mm | A±2 | S | D | E | C | F | M | T | ØV | Valve | Gearbox |
| 4 | 100 | 64 | 32 | 227 | 322 | 363 | 410 | 71 | 297 | 400 | 37 | 11 |
| 6 | 150 | 78 | 39 | 288 | 395 | 443 | 494 | 105 | 346 | 500 | 86 | 26 |
| 8 | 200 | 102 | 51 | 264 | 435 | 498 | 561 | 211 | 475 | 500 | 109 | 49 |
| 10 | 250 | 117 | 57 | 323 | 560 | 640 | 719 | 357 | 586 | 500 | 245 | 104 |
| 12 | 300 | 140 | 70 | 354 | 557 | 637 | 716 | 357 | 586 | 500 | 329 | 104 |
| 14 | 350 | 155 | 78 | 383 | 615 | 695 | 774 | 357 | 586 | 500 | 367 | 232 |
| 16 | 400 | 173 | 87 | 414 | 650 | 743 | 836 | 431 | 629 | 800 | 495 | 232 |
| 18 | 450 | 186 | 93 | 462 | 753 | 846 | 939 | 431 | 629 | 800 | 729 | 232 |
| 20 | 500 | 194 | 97 | 503 | 806 | 899 | 992 | 431 | 629 | 800 | 915 | 232 |
| 24 | 600 | 218 | 109 | 572 | 875 | 1045 | 1189 | 160 | 763 | 1200 | 1263 | 225 |

- Larger sizes and ratings on request.

GENERAL OVERALL DIMENSIONS – DOUBLE-FLANGED TYPE



VALSTAR VALVE CLASS 150# - PN10-16-20

| Valve Size | | Dimensions in mm | | | | | | | | | | | Weight in Kg | | |
|------------|------|-------------------|-----------------|------------------|----------------|-----|-----|------|------|-----|-----|-----|---------------------|--------------------|---------|
| In | mm | A±2 Short Pattern | S Short Pattern | A±2 Long Pattern | S Long Pattern | D | E | C | F | M | T | ØV | Valve Short Pattern | Valve Long Pattern | Gearbox |
| 3 | 80 | 114 | 57 | 180 | 325 | 143 | 295 | 325 | 358 | 52 | 184 | 160 | 30 | 36 | 5 |
| 4 | 100 | 127 | 64 | 190 | 350 | 168 | 320 | 350 | 383 | 52 | 184 | 160 | 49 | 53 | 5 |
| 6 | 150 | 140 | 70 | 210 | 370 | 190 | 340 | 370 | 403 | 52 | 184 | 160 | 63 | 76 | 5 |
| 8 | 200 | 152 | 76 | 230 | 406 | 213 | 365 | 406 | 453 | 71 | 297 | 400 | 66 | 79 | 11 |
| 10 | 250 | 165 | 83 | 250 | 488 | 255 | 440 | 488 | 539 | 105 | 346 | 500 | 102 | 121 | 26 |
| 12 | 300 | 178 | 89 | 270 | 523 | 296 | 475 | 523 | 574 | 105 | 346 | 500 | 155 | 170 | 26 |
| 14 | 350 | 190 | 95 | 290 | 563 | 326 | 500 | 563 | 626 | 211 | 475 | 500 | 192 | 228 | 49 |
| 16 | 400 | 216 | 108 | 310 | 623 | 364 | 560 | 623 | 686 | 211 | 475 | 500 | 274 | 321 | 49 |
| 18 | 450 | 222 | 111 | 330 | 648 | 387 | 585 | 648 | 711 | 211 | 475 | 500 | 343 | 404 | 49 |
| 20 | 500 | 229 | 115 | 350 | 750 | 427 | 670 | 750 | 829 | 357 | 586 | 500 | 452 | 528 | 104 |
| 24 | 600 | 267 | 134 | 390 | 800 | 475 | 720 | 800 | 879 | 357 | 586 | 500 | 617 | 719 | 104 |
| 28 | 700 | 292 | 146 | 430 | 855 | 525 | 775 | 855 | 934 | 357 | 586 | 500 | 914 | 1053 | 104 |
| 32 | 800 | 318 | 159 | 470 | 975 | 604 | 895 | 975 | 1054 | 357 | 586 | 500 | 1234 | 1405 | 104 |
| 36 | 900 | 330 | 165 | 510 | 1043 | 635 | 950 | 1043 | 1136 | 431 | 629 | 800 | 1325 | 1863 | 232 |
| 40 | 1000 | 410 | 205 | 550 | 1083 | 699 | 990 | 1083 | 1176 | 431 | 629 | 800 | 1894 | 2182 | 232 |

VALSTAR VALVE CLASS 300# - PN25-40-50

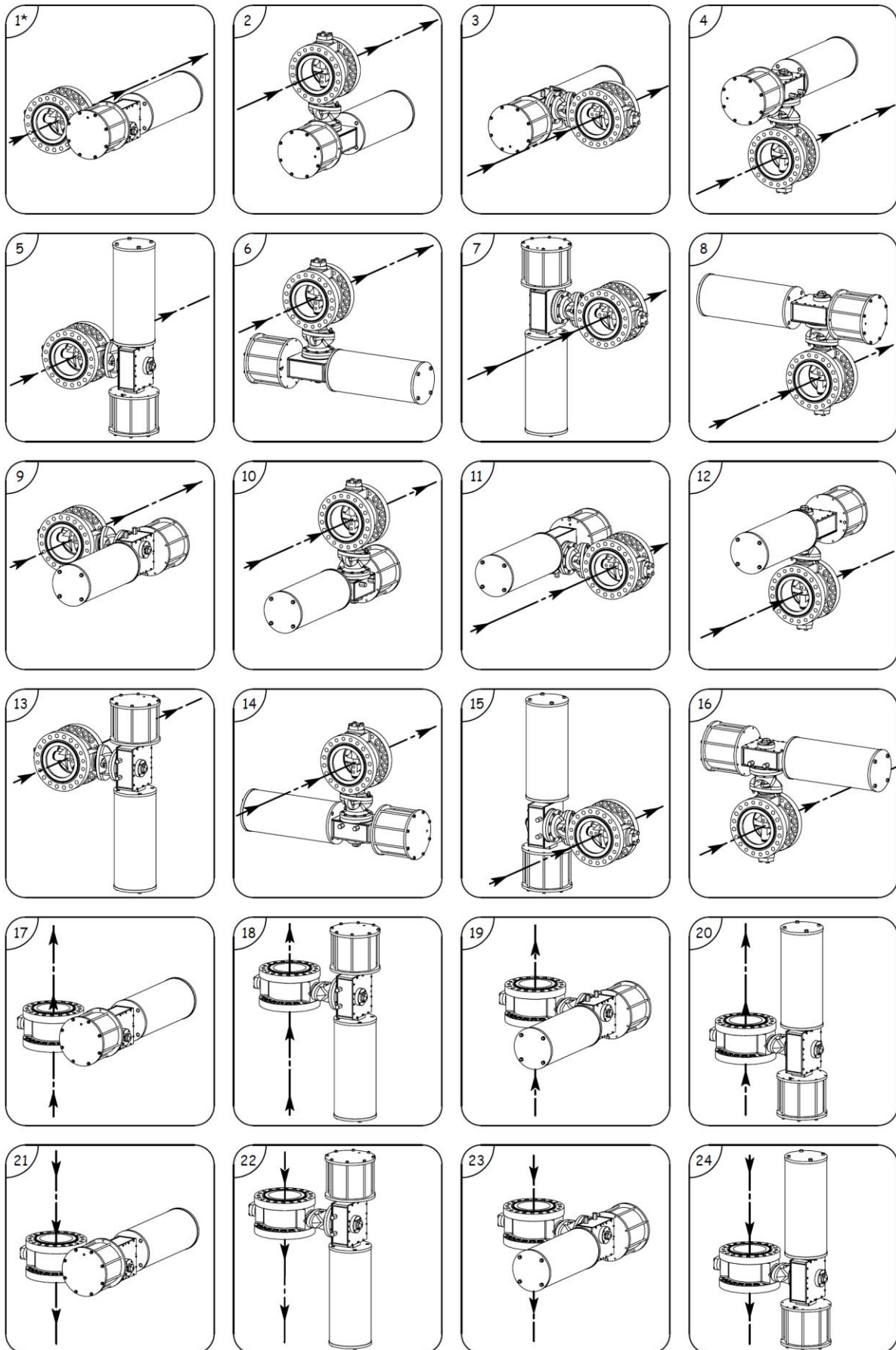
| Valve Size | | Dimensions in mm | | | | | | | | | | | Weight in Kg | | |
|------------|-----|-------------------|-----------------|------------------|----------------|-----|-----|-----|-----|-----|-----|-----|---------------------|--------------------|---------|
| In | mm | A±2 Short Pattern | S Short Pattern | A±2 Long Pattern | S Long Pattern | D | E | C | F | M | T | ØV | Valve Short Pattern | Valve Long Pattern | Gearbox |
| 3 | 80 | 114 | 57 | 180 | 90 | 143 | 295 | 325 | 358 | 52 | 184 | 160 | 30 | 36 | 5 |
| 4 | 100 | 127 | 64 | 190 | 95 | 168 | 320 | 350 | 383 | 52 | 184 | 160 | 49 | 53 | 5 |
| 6 | 150 | 140 | 70 | 210 | 105 | 203 | 355 | 396 | 443 | 71 | 297 | 400 | 63 | 77 | 11 |
| 8 | 200 | 152 | 76 | 230 | 115 | 240 | 425 | 473 | 524 | 105 | 346 | 500 | 107 | 128 | 26 |
| 10 | 250 | 165 | 83 | 250 | 125 | 277 | 457 | 520 | 583 | 211 | 475 | 500 | 165 | 198 | 49 |
| 12 | 300 | 178 | 89 | 270 | 135 | 309 | 507 | 570 | 633 | 211 | 475 | 500 | 235 | 266 | 49 |
| 14 | 350 | 190 | 95 | 290 | 145 | 330 | 585 | 665 | 744 | 357 | 586 | 500 | 314 | 369 | 104 |
| 16 | 400 | 216 | 108 | 310 | 155 | 375 | 630 | 710 | 789 | 357 | 586 | 500 | 413 | 485 | 104 |
| 18 | 450 | 222 | 111 | 330 | 165 | 410 | 660 | 740 | 819 | 357 | 586 | 500 | 532 | 605 | 104 |
| 20 | 500 | 229 | 115 | 350 | 175 | 443 | 700 | 780 | 859 | 357 | 586 | 500 | 599 | 711 | 104 |
| 24 | 600 | 267 | 134 | 390 | 195 | 496 | 750 | 843 | 936 | 431 | 629 | 800 | 929 | 1102 | 232 |

VALSTAR VALVE CLASS 600# - PN64-100

| Valve Size | | Dimensions in mm | | | | | | | | | | | Weight in Kg | |
|------------|-----|------------------|-----|-----|-----|------|------|-----|-----|------|-------|---------|--------------|--|
| In | mm | A±2 | S | D | E | C | F | M | T | ØV | Valve | Gearbox | | |
| 4 | 100 | 229 | 115 | 227 | 322 | 363 | 410 | 71 | 297 | 400 | 58 | 11 | | |
| 6 | 150 | 267 | 134 | 288 | 395 | 443 | 494 | 105 | 346 | 500 | 136 | 26 | | |
| 8 | 200 | 292 | 146 | 264 | 435 | 498 | 561 | 211 | 475 | 500 | 206 | 49 | | |
| 10 | 250 | 330 | 165 | 323 | 560 | 640 | 719 | 357 | 586 | 500 | 458 | 104 | | |
| 12 | 300 | 356 | 178 | 354 | 557 | 637 | 716 | 357 | 586 | 500 | 478 | 104 | | |
| 14 | 350 | 381 | 191 | 383 | 615 | 695 | 774 | 357 | 586 | 500 | 803 | 232 | | |
| 16 | 400 | 406 | 203 | 414 | 650 | 743 | 836 | 431 | 629 | 800 | 691 | 232 | | |
| 18 | 450 | 432 | 216 | 462 | 753 | 846 | 939 | 431 | 629 | 800 | 990 | 232 | | |
| 20 | 500 | 457 | 229 | 503 | 806 | 899 | 992 | 431 | 629 | 800 | 1244 | 232 | | |
| 24 | 600 | 508 | 254 | 572 | 875 | 1045 | 1189 | 160 | 763 | 1200 | 1716 | 225 | | |

- Larger sizes and ratings on request.

POSSIBLE ORIENTATIONS FOR ACTUATION





3 COMPLEMENTARY OFFERS FOR NUCLEAR AND ENERGY

- > Integrated logistics
- > Nuclear Services
- > Valves



SALES MANAGEMENT

ZI de la Brassière, chemin de la Buissonnée
26240 SAINT-VALLIER
FRANCE
Tel : +33 4 75 23 67 00

www.daher.com